

The 20th North East Asia Economic Forum
Hawaii, USA, August 7-9, 2011

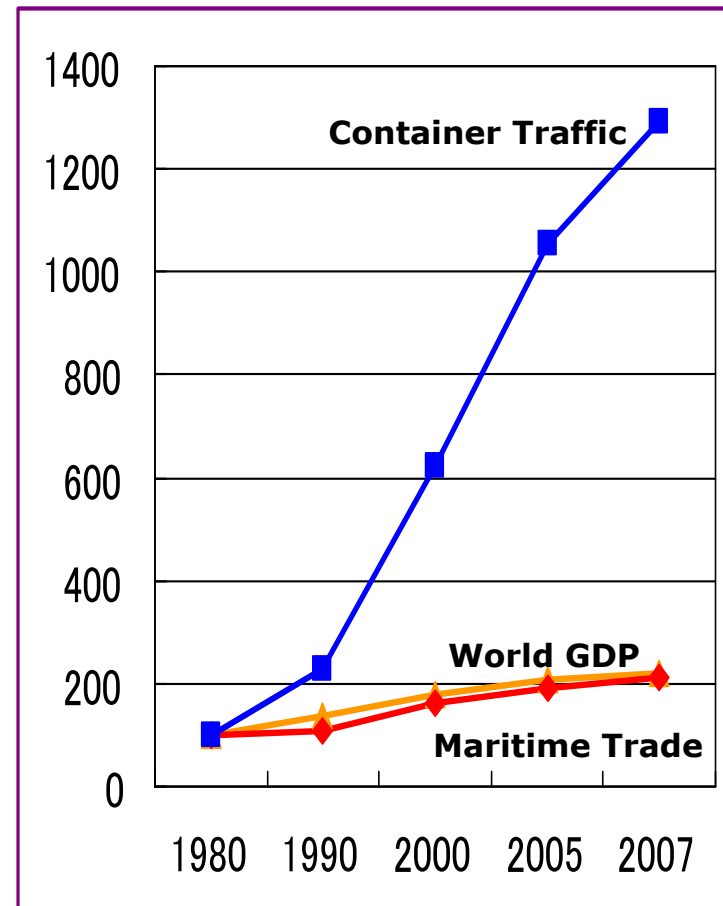
Towards the Integrated Regional Logistics System

Dr. Satoshi Inoue

Professor, National Graduate Institute for Policy Studies (GRIPS)
Emeritus Secretary General, International Association of
Ports & Harbors (IAPH)

Globalization and maritime trade challenges of ports

- World Maritime Trade
 - Increased by 110% from 1980 to 2007 (3.70 to 7.88 billion tons)
- World Container Traffic
 - Increased by 1200% from 1980 to 2007 (37 to 481 million TEU)
- World Ports' Challenges in response to globalization
 - Technological – containerization
 - Institutional – port privatization
 - Business model – port as logistics center rather than interface between sea and land transport



Port Expansions around the World



Maasvlakte II, Rotterdam

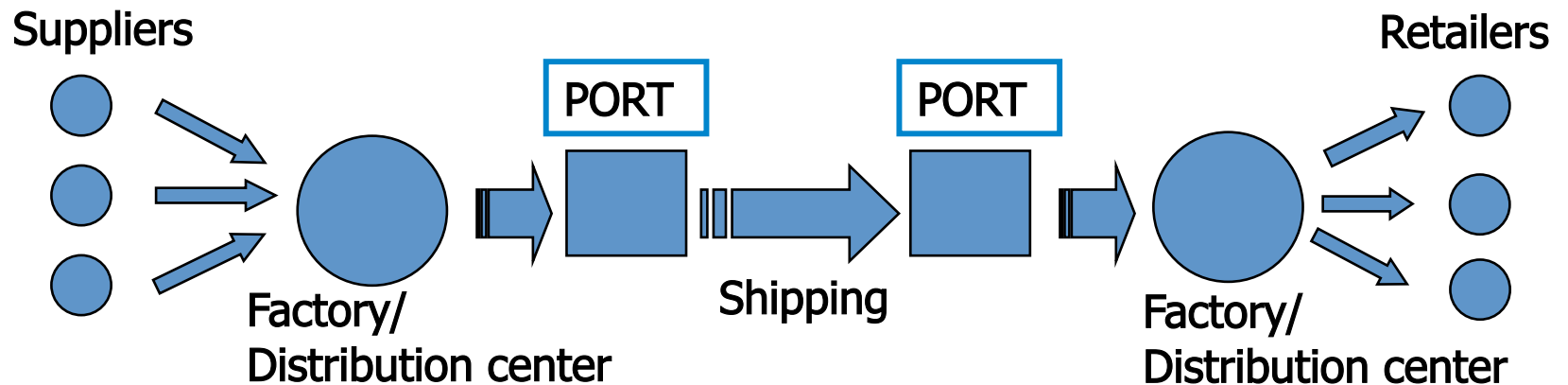


Yangshan, Shanghai



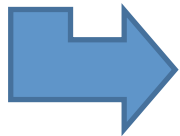
Integrating logistics activities into supply chain system

- Supply Chain Management
 - **Optimization** of total logistics system
 - Not just **cost & time** at port terminals, but also **predictability & traceability** of entire cargo flow are critical for SCM



Transforming a port into “logistics center” in supply chain

- Innovative terminals
- Logistics parks/zones
- Advanced hinterland access
- ICT system & infrastructure

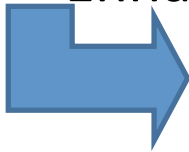


Opportunities for PPP projects



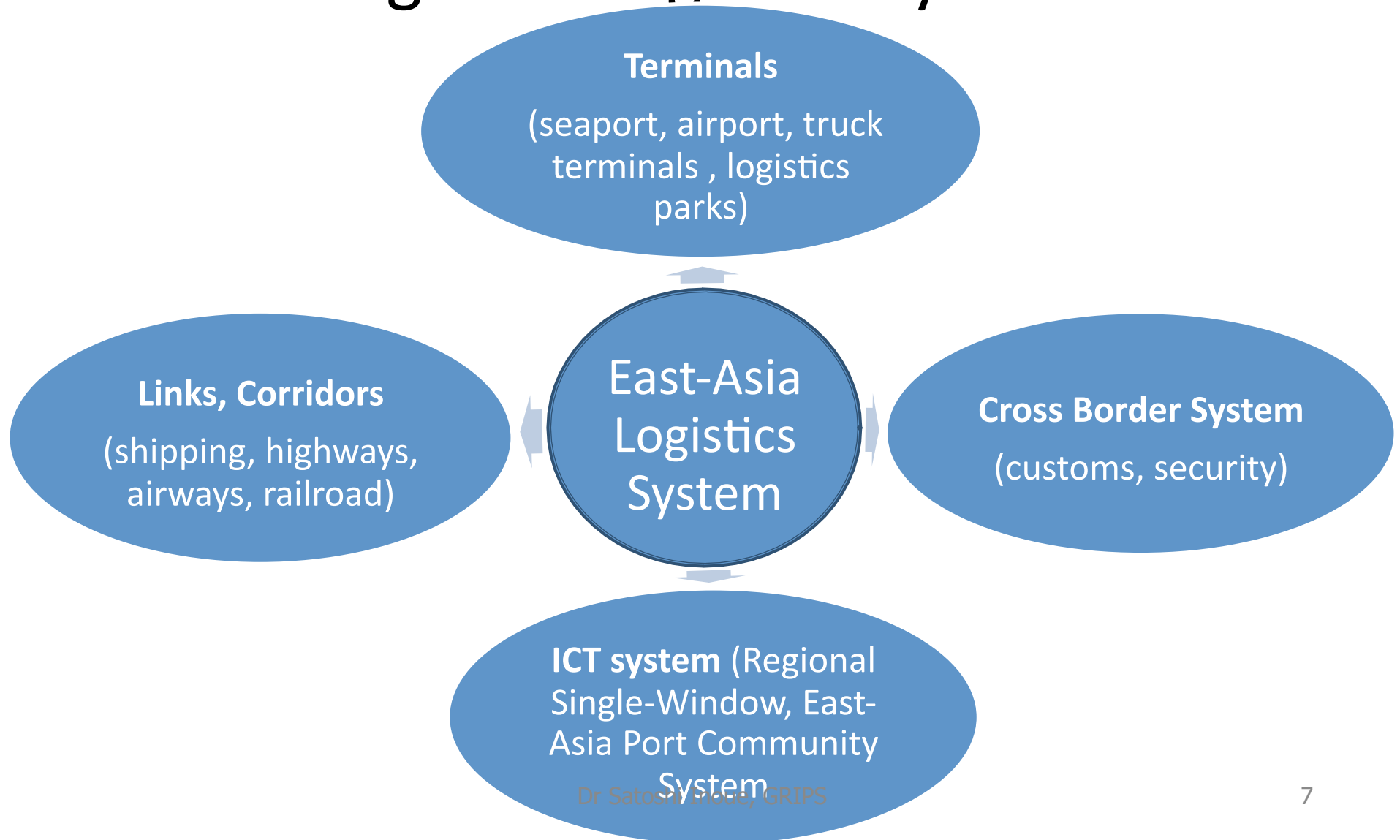
Economic Crisis & Paradigm Shift of Supply Chain Management

- Immediate impacts: historical decreases in world trade, shipping volume & port throughputs
 - Preparing for economic recovery by port improvements
- Structural impacts: Re-orientation of business principles
 - Re-assessing industrial activities in more balanced way (transport distance, cost, environment)
 - Shifting from simple globalization-oriented to more sustainability-oriented
 - Production moves closer to end markets
 - Enhancing resilience of logistics chain



Increasing demands for
Integrated Regional Logistics System

Developing the North-East Asia Regional Logistics System



Public-Private-Partnership for NEA Regional Logistics System

	Inter-Government Level	Public Corporation Level (Port, etc.)	Private Sector level
Cross border facilitation <ul style="list-style-type: none"> • Customs simplification • Free-trading agreement 	●	▲	▲
Security <ul style="list-style-type: none"> • Mutual recognition of AEO 	●	●	▲
Open market policy <ul style="list-style-type: none"> • Maritime carriers • Forwarders 	●	▲	●
Terminals projects <ul style="list-style-type: none"> • Innovative port terminals 	▲	●	●
Transport links projects <ul style="list-style-type: none"> • Marine shuttle 	▲	●	●
ICT systems <ul style="list-style-type: none"> • Single-window, PCSs 	▲	●	●

Thank you for your attention

For Contact:

Dr. Satoshi Inoue, Professor
National Graduate Institute for
Policy Studies (GRIPS)
7-22-1 Roppongi, Minato-Ku, Tokyo,
Japan 106-8677
Email: s-inoue@grips.as.jp
Tel: +81-3-6439-6127